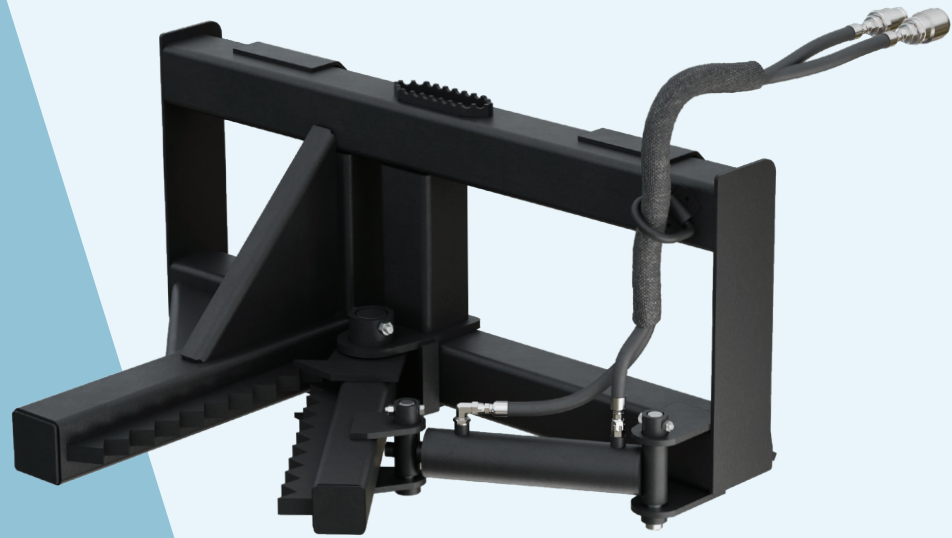


# SKID STEER TREE AND POST PULLER



Remove trees, shrubs, fence posts, and other stubborn obstacles with the Star Industries Tree & Post Puller. Designed to grip securely and pull material directly from the ground, this attachment eliminates the need for extensive digging around roots. Its heavy-duty jaws and powerful hydraulic cylinder provide the force needed to remove small and medium-sized trees.

- ➔ Pulls trees, shrubs, and posts without extensive digging
- ➔ Removes trees up to 8" in diameter
- ➔ Ideal for land clearing, fence line maintenance, and site preparation

## FEATURES

- ➔ Heavy-duty jaw design provides a secure grip
- ➔ Compact 32" length allows easy maneuverability in tight areas
- ➔ Removes roots along with the tree to help reduce regrowth

## SPECIFICATIONS

SKU	Weight	Width	Length	Cylinder Size	Max Pull Diameter
196-45	280 lbs	45"	32"	2-1/2" x 8"	8"



4101 Garland Drive Fort Worth TX 76117  
Phone | 817-485-6073 Fax | 817-428-6008  
USA & Canada Toll Free 800-541-1797

[www.starindustries.com](http://www.starindustries.com)

Operating Manual and Safety Information available online.